


Developers  
**Nilkanth**

Architect  
 **KMA Architects**  
+91 70469 17777

Site Address :  
Sr. No 457, New Ring Road, Vapi Town  **+91 90543 70347**  
E-Mail : [info@nilkanth.co.in](mailto:info@nilkanth.co.in) | Web : [www.nilkanth.co.in](http://www.nilkanth.co.in)



**Nilkanth**  **anant**

“life with opportunity”

“life with opportunity”





Welcome to new era of living.  
The elegance of elevated living takes a  
whole new meaning of “ANANT”.  
Designed with intricate details, your new  
home will become your heaven.

Dilkanth  anant











## VISTA OF LUXURY

Having a home of your own where you can cherish the moments of life is everyone's dream. Nilkanth "ANANT" is wonderful opportunity for you to live the life you have always aspired for.

These modern 2 & 3 BHK lavish Homes presents you an amazing living experience that is filled with peace, security, comfort and happiness. It's a home you and your loved ones deserve and always dreamt of. So, come home to Nilkanth "ANANT".







## "LIFE WITH HAPPINESS"

You don't just live your life in Nilkanth Anant, you enjoy life here.  
The many different amenities make life fun and happy when you are living here.  
Welcome to a life of fulfilment.  
Staying fit is the key to happiness. The incredible space within the complex is home  
to a gym, outdoor sports arena and a lab exclusive children's play area.



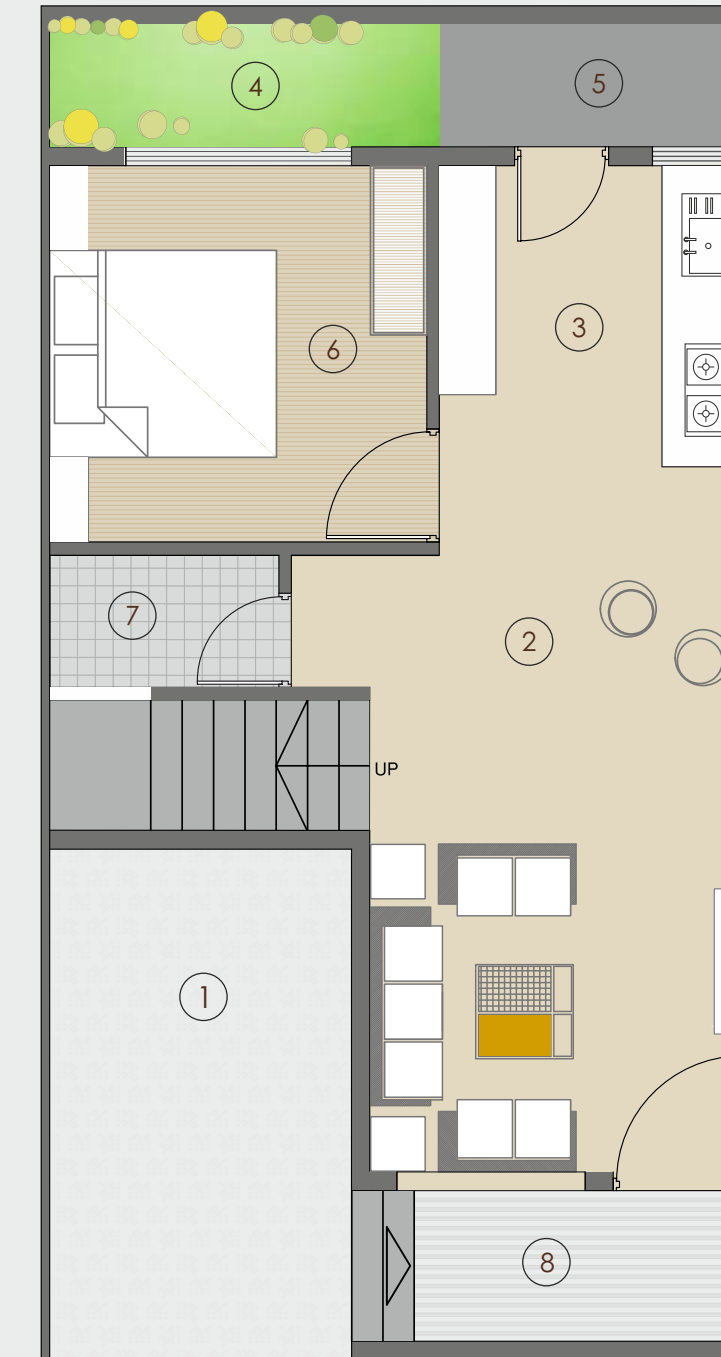


**GROUND FLOOR**

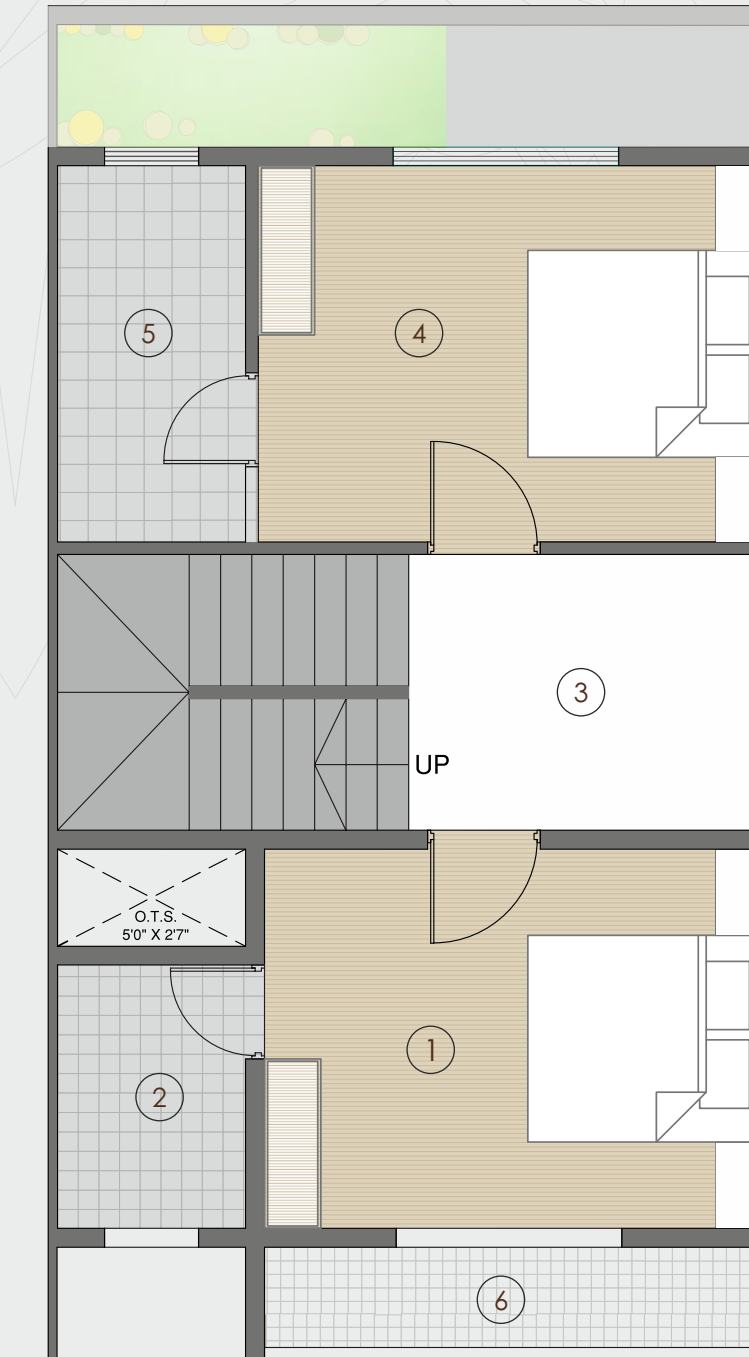
- |    |            |                |
|----|------------|----------------|
| 1. | Parking    | - 8'0"x13'7"   |
| 2. | Hall       | - 10'0"x18'5"  |
| 3. | Kitchen    | - 8'2"x8'0"    |
| 4. | Open Space | - 10'0" x 3'9" |
| 5. | Wash Area  | - 8'0" x 3'9"  |
| 6. | Bed Room   | - 10'0"x10'0"  |
| 7. | Toilet     | - 6'0"x3'6"    |
| 8. | Otta       | 4'6" Wide      |

**FIRST FLOOR**

- |    |                |               |
|----|----------------|---------------|
| 1. | Bed Room       | - 13'1"x10'1" |
| 2. | Toilet         | - 5'0"x7'0"   |
| 3. | Family Sitting | - 9'2"x6'10"  |
| 4. | Bed Room       | - 13'2"x10'0" |
| 5. | Toilet         | - 5'0"x10'0"  |
| 6. | Balcony        | - 3'0" Wide   |



**GROUND FLOOR PLAN**

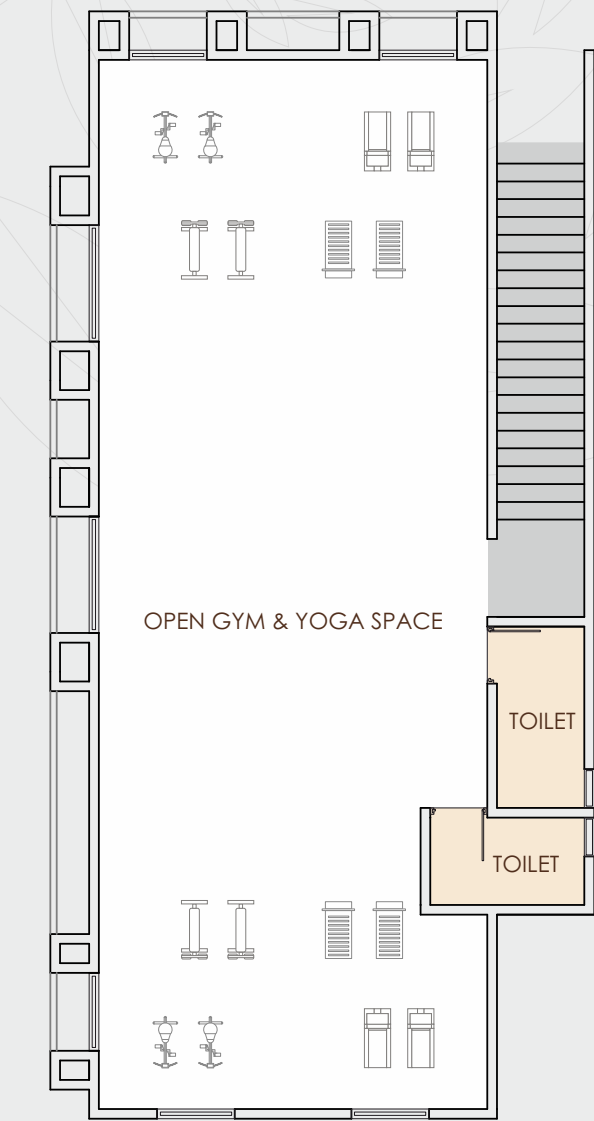


**FIRST FLOOR PLAN**





GROUND FLOOR



FIRST FLOOR

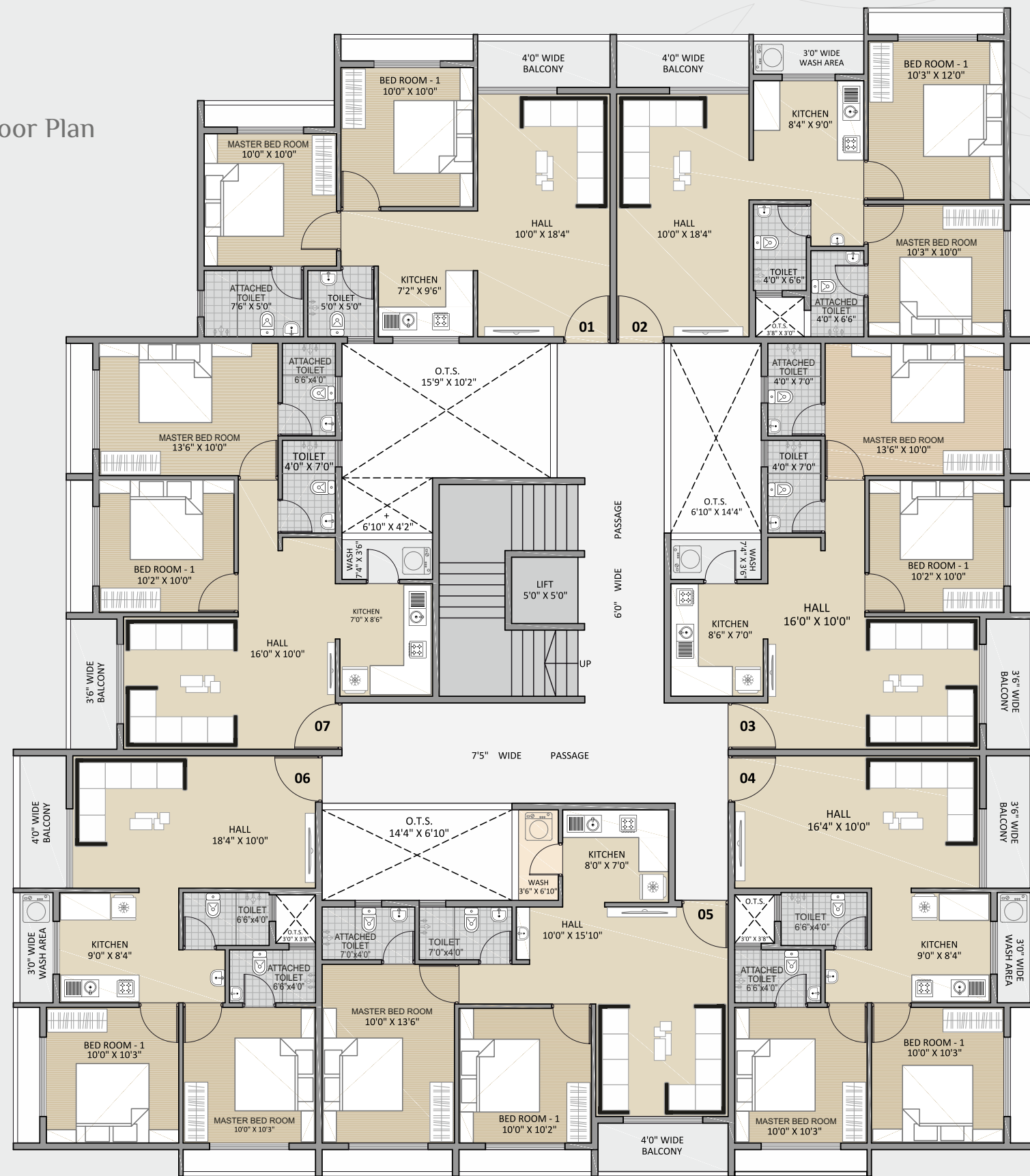




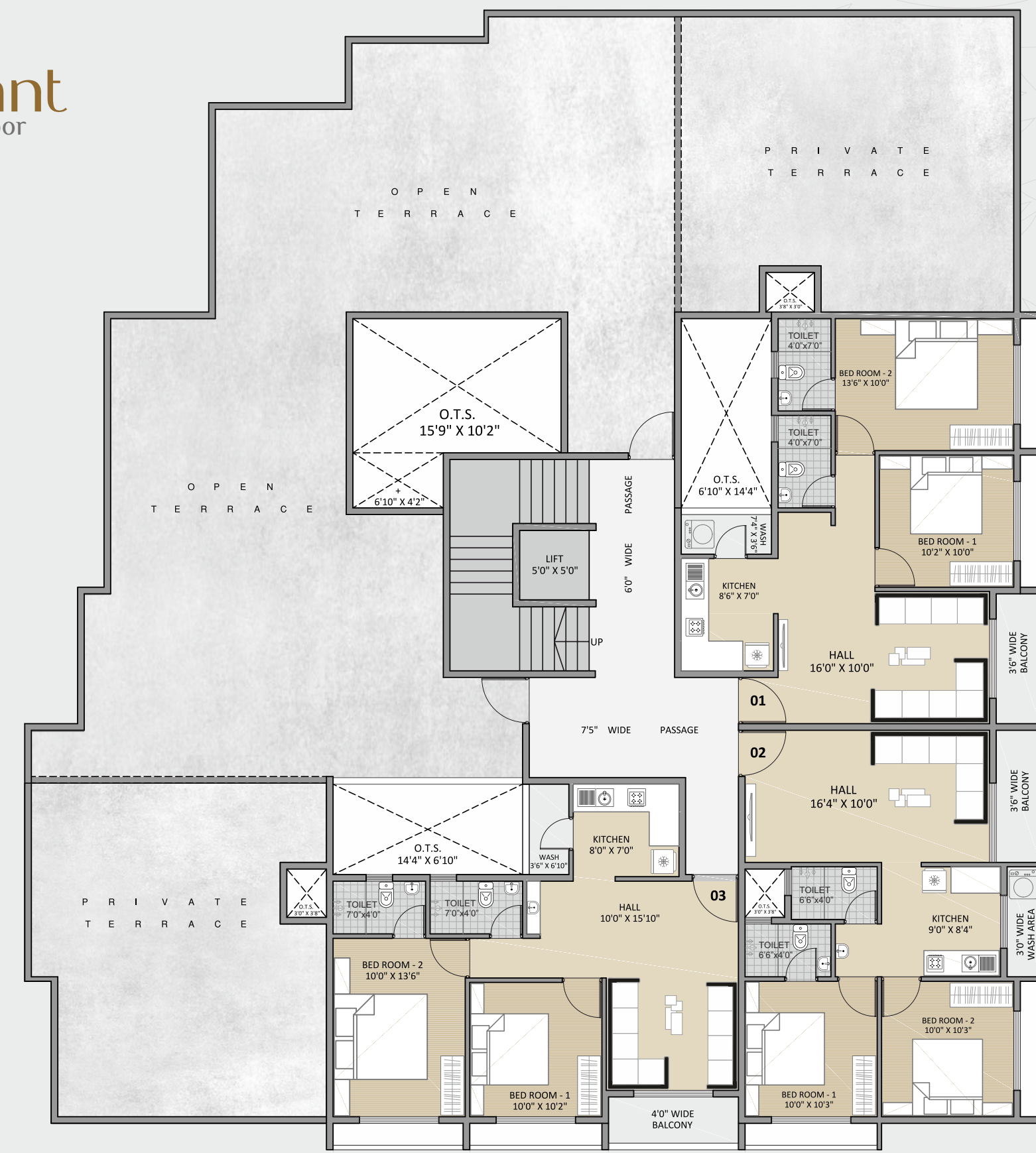




**anant**  
Building Typical Floor Plan



**anant**  
Fifth Floor

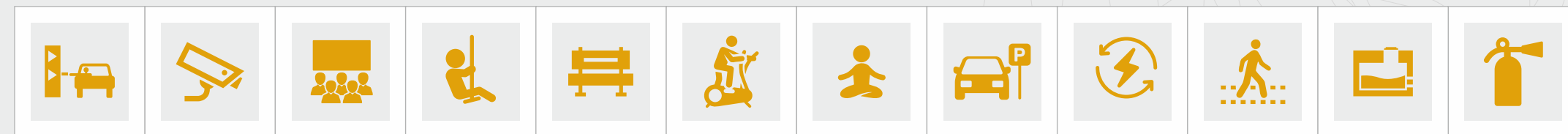






## AMENITIES & FACILITY

24x7 Security CCTV Surveillance | Children Play Area | Multipurpose Hall | Gymnasium | Yoga Space | Walking Track | Senior Citizen Park Lawn Area | Underground Wiring | Wide Internal Roads | Auto Water Supply System | Individual Water Tank For Each Unit | Water Filtration Plant



## SPECIFICATION

### FLOORING

24" X 24" Vitrified tiles flooring in all rooms.

### TILING

Designer wall tiles in all bathrooms and toilets up to dado. Granite top finish kitchen platform with S.S. Sink and glazed tile dado.

### FINISHES

Interior: Putty finished wall.

Exterior: Double coat sand face plaster with weather resistance paint.

### WINDOWS

Power coated aluminum sliding windows with mosquito net shutter.

### DOORS

Decorative entrance laminated door and other decorative fittings.  
Internal doors: Laminated flush door.

### ELECTRICAL

Good quality concealed copper wiring with standard modular switches.

### PLUMBING & SANITATION

Concealed PVC piping and standard quality sanitary wares & C.P. Fittings.

### INTERNAL ROAD

Combination of paver blocks and RCC roads. Rain water harvesting.



**anant**  
Location Map

### NEAR BY CONNECTIVITY

- Vapi GIDC - 800 Mtr
- National Highway 48 - 1.5 Km
- Post Office - 800 Mtr
- School - 600 Mtr
- Hospital - 1.0 Km
- Railway Station - 1.0 Km
- Market - 1.2 Km
- Police Station - 1.0 Km
- Fire Station - 1.0 Km



**Dilkant**  **anant**



Disclaimer : The developer reserves the right to change or revise or make any modifications, omissions or alterations in the scheme as a whole or any part thereof or any details there in, at sole discretion without any prior notice. Such changes would be binding to all the members. • All the architectural and interior views in brochure are computer graphics simulated interpretation of the actual property. • All the dimensions given are approximate and are from unfinished surfaces. • This brochure including the images there in is just for an easy presentation of the project and should not be treated as a legal document. • In addition, stamp duty, registration charges, VAT and society maintenance deposit changes would be extra. • GEB/ Water connection will be extra as decided by the developers. • GST as usual. • Subject to Vapi jurisdiction. • No modification in common services and elevation.